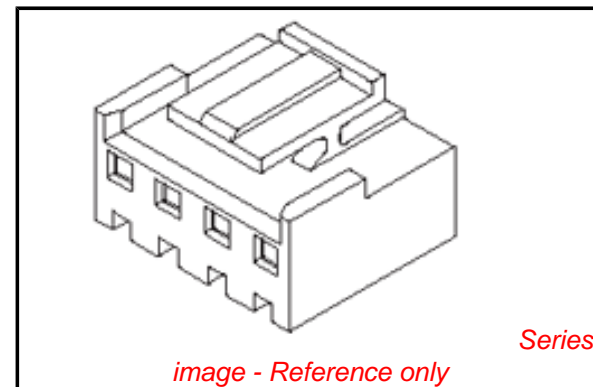


PLEASE CHECK WWW.MOLEX.COM FOR LATEST PART INFORMATION

Part Number: [0359770403](#)
Status: **Planned for Obsolescence**
Overview: [mv396](#)
Description: 3.96mm (.156") Pitch Wire-to-Board Housing, Positive Lock, 4 Circuits, PA Polyamide Nylon 6/6, UL 94V-2, Yellow, Glow Wire Compatible

Documents:

| | |
|--|--|
| 3D Model | Product Specification PS-35979-001 (PDF) |
| Drawing (PDF) | RoHS Certificate of Compliance (PDF) |
| Product Specification PS-35978-001 (PDF) | |



Agency Certification

| | |
|-----|-----------|
| CSA | LR19980 |
| TUV | R72090224 |
| UL | E29179 |

General

| | |
|----------------|-----------------------|
| Product Family | Crimp Housings |
| Series | 35977 |
| Overview | mv396 |
| Product Name | MV-396™ |

Physical

| | |
|-------------------------------|----------------|
| Breakaway | No |
| Circuits (maximum) | 4 |
| Color - Resin | Yellow |
| Flammability | 94V-0 |
| Gender | Female |
| Glow-Wire Compliant | No |
| Keying to Mating Part | None |
| Lock to Mating Part | Yes |
| Material - Resin | Nylon |
| Number of Rows | 1 |
| Packaging Type | Bag |
| Panel Mount | No |
| Pitch - Mating Interface (in) | 0.156 In |
| Pitch - Mating Interface (mm) | 3.96 mm |
| Polarized to Mating Part | Yes |
| Stackable | Yes |
| Temperature Range - Operating | -25°C to +85°C |

Electrical

| | |
|-------------------------------|----|
| Current - Maximum per Contact | 7A |
|-------------------------------|----|

Material Info

Reference - Drawing Numbers

| | |
|-------------------------|----------------------------|
| Packaging Specification | PK-35977-001 |
| Product Specification | PS-35978-001, PS-35979-001 |
| Sales Drawing | SD-35977-001 |

EU RoHS

ELV and RoHS Compliant
REACH SVHC
 Not Reviewed
Halogen-Free Status

China RoHS



Need more information on product environmental compliance?

Email productcompliance@molex.com
 For a multiple part number RoHS Certificate of Compliance, [click here](#)

Please visit the [Contact Us](#) section for any non-product compliance questions.

Search Parts in this Series

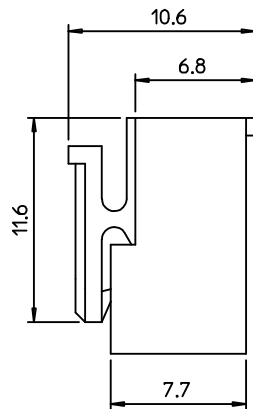
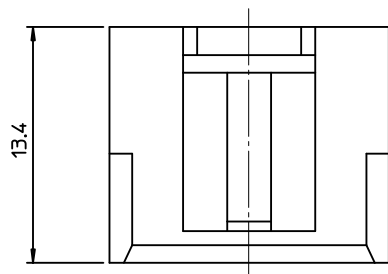
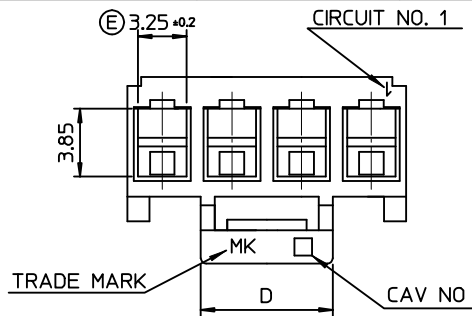
[35977Series](#)

Mates With

Wire-to-Board Header [35978](#) , [35979](#)

Use With

Wire-to-Board Terminal [35922](#)



NOTES

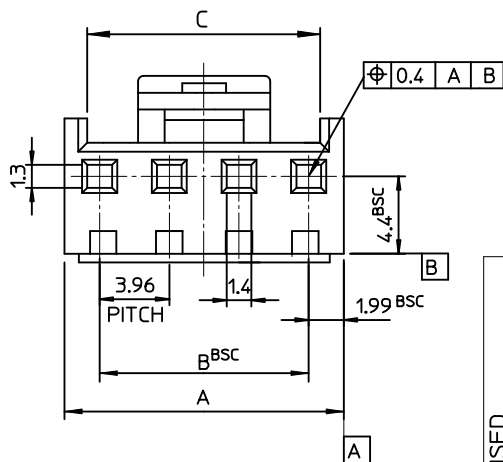
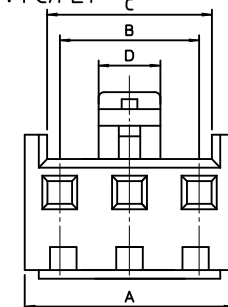
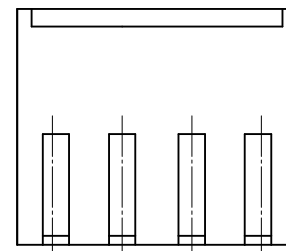
- USED WITH TERMINAL : 35922-9002
- MATED WITH HEADER ASS'Y : 35978-**1*(PA66) 35978-**2*(PA66)
 LEGEND 35978-**3*(PC/PET) 35978-**4*(PC/PET)

35977-****

- COLOR : 0 - WHITE
 1 - BLACK
 2 - RED
 3 - YELLOW
 4 - BLUE

MATERIAL 0 : PA66 (E) 9 : PC/PET

CURCUIT NO. (02,03,04...)



| | | | | | | |
|------|-------|-------|-------|-----------|------------|----------|
| 19.9 | 56.88 | 55.44 | 59.42 | 3597715** | 35977-15** | 15 |
| 19.9 | 52.92 | 51.48 | 55.46 | 3597714** | -14** | 14 |
| 19.9 | 48.96 | 47.52 | 51.5 | 3597713** | -13** | 13 |
| 19.9 | 45.0 | 43.56 | 47.54 | 3597712** | -12** | 12 |
| 19.9 | 41.04 | 39.6 | 43.58 | 3597711** | -11** | 11 |
| 19.9 | 37.08 | 35.64 | 39.62 | 3597710** | -10** | 10 |
| 17.7 | 33.12 | 31.68 | 35.66 | 3597709** | -09** | 9 |
| 15.7 | 29.16 | 27.72 | 31.70 | 3597708** | -08** | 8 |
| 13.7 | 25.20 | 23.76 | 27.74 | 3597707** | -07** | 7 |
| 7.5 | 21.24 | 19.80 | 23.78 | 3597706** | -06** | 6 |
| | 17.28 | 15.84 | 19.82 | 3597705** | -05** | 5 |
| | 13.32 | 11.88 | 15.86 | 3597704** | -04** | 4 |
| | 9.36 | 7.92 | 11.90 | 3597703** | -03** | 3 |
| 3.5 | 5.4 | 3.96 | 7.94 | 3597702** | 35977-02** | 2 |
| D | C | B | A | MAT'L NO | ENG NO. | CIRCUITS |

| REVISED EC NO: KOR2009-0137 DRAWN: JHPARK01 2009/05/21 CHKD: WY YANG 2009/05/21 APPR: YUNSIKKIM 2009/05/22 | QUALITY SYMBOLS = 0 = 0 | GENERAL TOLERANCES (UNLESS SPECIFIED) <table border="1"> <tr> <th></th> <th>mm</th> <th>INCH</th> </tr> <tr> <td>4 PLACES</td> <td>± ---</td> <td>± ---</td> </tr> <tr> <td>3 PLACES</td> <td>± ---</td> <td>± ---</td> </tr> <tr> <td>2 PLACES</td> <td>± ---</td> <td>± ---</td> </tr> <tr> <td>1 PLACE</td> <td>± 0.30</td> <td>± ---</td> </tr> </table> | | mm | INCH | 4 PLACES | ± --- | ± --- | 3 PLACES | ± --- | ± --- | 2 PLACES | ± --- | ± --- | 1 PLACE | ± 0.30 | ± --- | DIMENSION STYLE MM ONLY | SCALE 3:1 | DESIGN UNITS METRIC | THIRD ANGLE PROJECTION |
|---|-------------------------------|---|---|----------------------------------|-----------------------------|----------|-------|-------|----------|-------|-------|----------|-------|-------|---------|--------|-------|-----------------------------------|---------------------|-------------------------------|----------------------------|
| | | mm | INCH | | | | | | | | | | | | | | | | | | |
| | 4 PLACES | ± --- | ± --- | | | | | | | | | | | | | | | | | | |
| | 3 PLACES | ± --- | ± --- | | | | | | | | | | | | | | | | | | |
| 2 PLACES | ± --- | ± --- | | | | | | | | | | | | | | | | | | | |
| 1 PLACE | ± 0.30 | ± --- | | | | | | | | | | | | | | | | | | | |
| DESCRIPTION 3.96 PITCH W-T-B CONN. HOUSING | DRAWN BY YR.WI | DATE 1999/05/06 | MOLEX INCORPORATED SD-35977-001 | | | | | | | | | | | | | | | | | | |
| CHECKED BY JH.OH | DATE 1999/05/06 | | | | | | | | | | | | | | | | | | | | |
| APPROVED BY CW.LEE | DATE 1999/05/06 | | MATERIAL NO. SEE TABLE | DOCUMENT NO. SEE TABLE | SHEET NO. 1 OF 01 | | | | | | | | | | | | | | | | |
| DRAFT WHERE APPLICABLE MUST REMAIN WITHIN DIMENSIONS | SIZE A3 | | THIS DRAWING CONTAINS INFORMATION THAT IS PROPRIETARY TO MOLEX INCORPORATED AND SHOULD NOT BE USED WITHOUT WRITTEN PERMISSION | | | | | | | | | | | | | | | | | | |